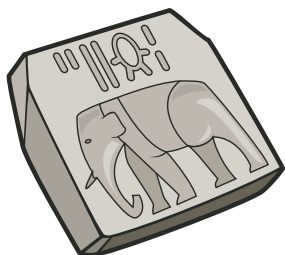


Visit the museum and see if you can find the missing words for these sentences!



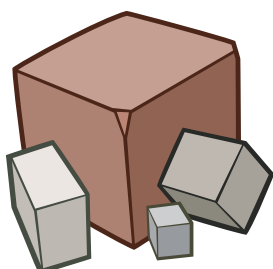
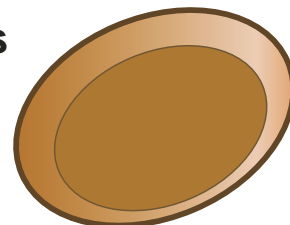
Some archaeologists think that this bronze figurine may have been attached to a \_\_\_\_\_ and carried in a procession.

Some archaeologists think that this terracotta figurine shows a woman dressed for a \_\_\_\_\_.

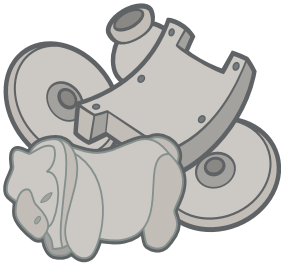


This elephant seal is about the size of a large \_\_\_\_\_.

This plate is made of \_\_\_\_\_, which was a rare and expensive metal.

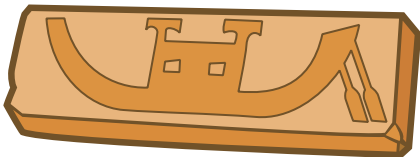
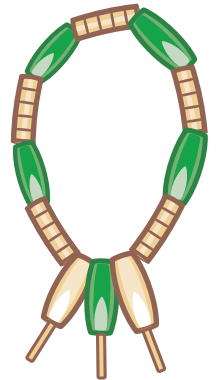


\_\_\_\_\_ used weights like these to measure goods.



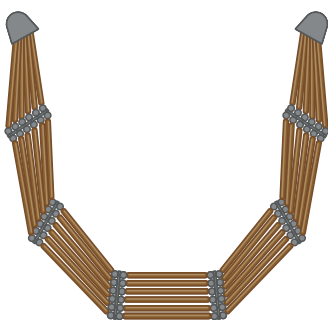
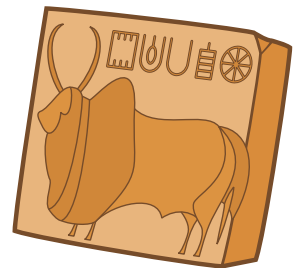
This model cart is made of \_\_\_\_\_ .  
Full-size \_\_\_\_\_ carts rotted away in the  
warm, damp climate of Mohenjo-Daro.

This necklace is made of \_\_\_\_\_ beads and  
\_\_\_\_\_ beads, which were rare and  
valuable.



There is a boat on this terracotta tablet. The  
cabin in the centre may have been used as  
\_\_\_\_\_ or a safe place for  
goods.

The most popular image carved on seals was a one-  
horned animal, like a \_\_\_\_\_. Archaeologists  
think that this was a mythical animal.



This necklace or belt is made up of \_\_\_\_\_  
carnelian beads.

### Missing words

copper

special occasion

green stone

wooden pole

42

gold

unicorn

postage stamp

wooden

terracotta

traders

sleeping quarters